

Digital Diva

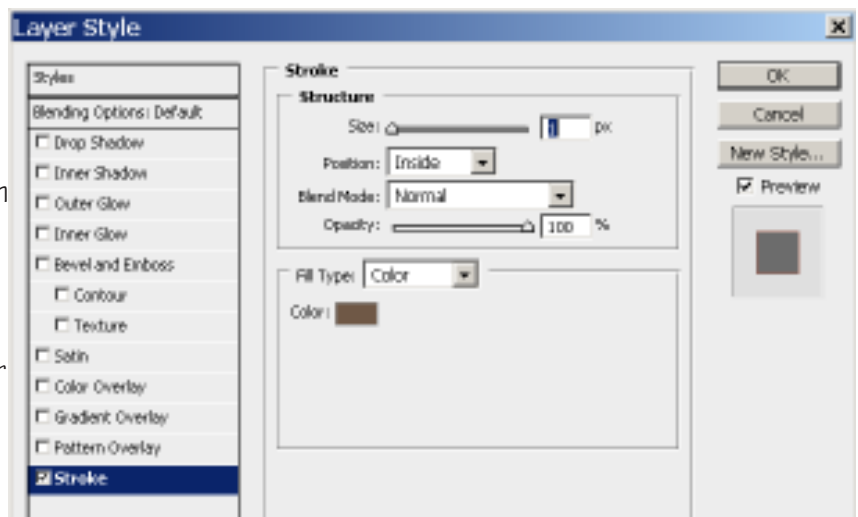
At last month's slide show judge Greg Cooper remarked on how much he liked the way some members had outlined their digital submissions with a border, this was followed by the query from a member as to how to accomplish this. In this tutorial I will show how to outline your digital submission with a stroke, and also how to make a wider border that looks more like a mat.

First the **Stroke**, which is especially useful if you have large areas of black on the edges of your photograph which blend in to the black background when projected.

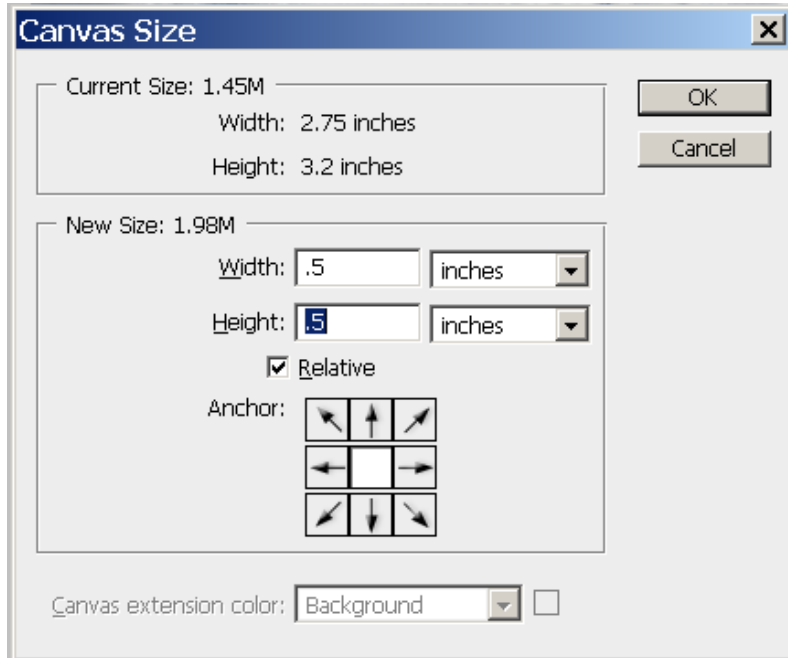


Open your flattened image, it will only have one layer, the background layer, which is not editable, so the first thing to do is to change it to an editable layer. We do this by double clicking on the layer and then saying OK in the resulting dialog box. Now we can add a stroke. Go to the bottom of the layers palette and click on the **fx** symbol and at the bottom of the pop-up menu choose **Stroke**.

If you want a narrow stroke put a size from 1-3 pixels in the **Size** box. Make sure you have chosen **Inside** for the **Position** or your stroke won't show. Click on the color swatch to bring up the **Color Picker** and choose a color from your image. Make sure it will show up against the black projection background. If you don't like the size or color you've chosen, double click on the word **Stroke** next to the eyeball in the layers panel and the **fx** dialog will re-open and you can make any changes you wish. When you are satisfied with the result go to **Layer>Flatten Image** and save it as a **jpg** for competition.



If you want to use a wider border, like a mat, then the Stroke style won't work as it would cover too much of your image. We start the same way by double clicking on the background layer to change it to an editable layer. If you wish to bypass the dialog hold the **Alt/Opt** key down while you click, then hold the **Ctrl/Cmnd** key down while you click on the new layer icon at the bottom of the **Layers Panel** (it's the one next to the trash), this will put a new empty layer under your background layer.



Go to **Image>Canvas Size** and in the following dialog check the **Relative** box and enter the width you want. Don't forget that the size for entry in competition will include this mat and if you make it too big your image will be very small.

I have entered a size of half an inch and because I checked the **Relative** box my border will be the same all the way around.

Your image will now have a checkerboard border around it. To fill it with white **press D** on the keyboard to get the default colors of Black and White, then press **Ctrl-backspace**, Mac **Cmnd-delete** to fill the layer with white.

If you would like to have the bottom border wider than the sides you can use the crop tool. Put a crop around the image and with the bottom layer still active pull the bottom crop handle down. press enter, then **ctrl-backspace** and you're done. If you want a double or triple border you can add more layers underneath and repeat what you've done.

Don't forget to Flatten the image when you're done to save it as a jpg.

I have given you two ways to increase your canvas size here, one using the Canvas Size dialog and the other using the crop tool.

See you in December,
Susannah

